

COSPAR MOSCOW 2014

COSMOS

40th SCIENTIFIC ASSEMBLY

Russia, Moscow, 2-10 August 2014

DELEGATE HANDBOOK

TABLE OF CONTENTS

General information about Moscow.....	3
Moscow parks.....	5
Moscow museums.....	7
Airports.....	8
Moscow metro.....	11
Moscow taxi.....	12
General information about COSPAR assembly.....	13
Venue.....	14
Agenda.....	15
Registration fee	18
Special event.....	19
Excursions on request.....	19
Transfer.....	19
Lunch.....	20
Getting good food for a reasonable price in Moscow.....	20
Money matters.....	22
Mobile communications.....	23
Useful tips.....	24

GENERAL INFORMATION ABOUT MOSCOW



If you are interested in fresh, reliable and extensive information about Moscow as a travel destination let us first of all recommend you visiting official Moscow guide in Internet www.travel2moscow.com. Here you would find everything for your inspiration (interesting articles, ideas, photos, videos), useful information, recommendations for you and possible accompanying persons. Here you can get information in Russian, English, German, Spanish, Chinese languages. You can download here different brochures like:

- 100 Best Places of Moscow
- Moscow. Classical and Modern
- Moscow Parks and Estates
- Moscow and Music
- Moscow and Literature
- Moscow and Orthodoxy
- Cafes, bars, summer terraces
- Tourism in Moscow Without Barriers (for disabled)
- Moscow's Most Extraordinary Museums and Monuments
- Moscow River
- Moscow Metro
- Etc, etc

Here you can also download different Moscow maps, tour itineraries and many more. So, please visit the website of Moscow Tourism Committee for Moscow guests.

So, Moscow is the capital and the largest city of the Russian Federation, its political, administrative, economic, industrial, educational and cultural center. Population of the city is over 14 million people. Moscow is situated on the banks of the Moskva River, which flows for just over 500 km through the East European Plain in central Russia. There are a lot of beautiful palaces, old mansions, cathedrals, churches, monuments, museums, art galleries and theatres in Moscow. The Historical Museum, the State Pushkin Museum of Fine Arts, the State Tretyakov Gallery are known all over the world. The Bolshoi, Malyi and Art theatres are famous, too. Moscow can be considered by right the International city. Tourists usually visit our city with great pleasure. Especially they like to come to Moscow in spring and summer, when it is mostly beautiful.

Moscow was founded in 1147 by the Russian Prince Yuri Dolgoruky on the shores of Moskva River. Moskva River played an important role in history of Moscow. It was used to transfer goods and any kind of native materials. Basically, you could get as far as Black and Caspian seas from Moskva River, so the trade was flourishing. Starting in the 1470s, the renovation and enlargement of Moscow's Kremlin and its major churches and palaces gave Moscow the capital status and in 1547 Ivan IV, known as Ivan the Terrible, was crowned officially as tsar of Russia. It became the national political capital during the reign of Grand Duke Ivan III Vasilyevich, who unified the Russian principalities.

Among significant historical places of Moscow there are some popular squares. The main and the best known one is Red Square – the heart of the city. It is a very attractive tourist destination adjoining lots of places of interest, such as: the Kremlin and its territory, St. Basil's Cathedral, the State Historical Museum, the Lenin's Mausoleum, Minin and Pozharsky monument, the monument of Marshal Georgy Zhukov.



The Kremlin is the oldest historical and architectural center. At first the Kremlin was a wooden fort. Under Dmitry Donskoy the Kremlin was built of white stone. Red-brick walls and towers replaced the walls of white stone. The Spassky Tower with its Kremlin chimes is the symbol of Russia. On the territory of the Kremlin you can see old cathedrals, the Bell Tower of Ivan the Great, the Palace of congresses, the Tsar's Cannon and the Tsar's Bell, the biggest cannon and bell in the world. St. Basil's Cathedral was built in the middle of the 16th century to commemorate the victory over the Golden Horde. The Lenin's Mausoleum and the Kremlin wall behind it with the Tombs of other famous country's leaders and well-known figures are the symbol of Socialism and Communism political systems. The State Historical Museum holds a supremely rich collection of artifacts that tells the history of the Russian lands from the Paleolithic period to present days.

There are lots of beautiful old streets in Moscow that keep history of ancient centuries. Tverskaya Street is the main central street of the city. The well-known biggest trade stores GUM (GUM Department Store) and TSUM (Central Department Store) are located here. The Arbat is one of the oldest surviving streets in Moscow. A lot of tourists appreciate its day- and- night views and, of course, a great variety of Russian souvenirs. The famous Matreshka doll is still considered the best souvenir one must take home from Russia. The Old Arbat is the foot – street, different performances of musicians, poets, pantomime – actors take place there. Some caricature painters draw all comers there. Beside of legendary squares and streets there are many wonderful parks in the city.

The Moscow Royal Estates of Russian tsars are Kolomenskoye, Izmailovo, Lefortovo, Petrovsky Park, Tsaritsyno, Kuzminki, Losinyi Ostrov and others. Today all these parks are modern and contain places for walk, bike routes, skating rinks, children's play grounds, ski, skate and bike hire and, of course, the museums – in buildings and under the open sky – with detailed and interesting information, that can satisfy the curiosity of each guest. In 1325 the residence of Metropolitan of Kiev and All Russia was moved from Vladimir to Moscow, making it the main religious center of the country. In that time the Cathedral of the Dormition (located on the Kremlin territory) was built and became the first stone cathedral in Moscow. One of the latest religious centers in Moscow is the Cathedral of Christ the Savior. This church is to be right the symbol of new Russia. Built in 19th century (in commemoration of victory over Napoleon), it was destroyed by the Communists to be restored almost hundred years later! These days it is the tallest Eastern Orthodox Church in the world. Moscow religion units a lot of confessions, because of different peoples, settled the city. Beside of orthodox churches there are mosques and synagogues in the capital. The main Moscow Mosque is located near the metro station 'Prospect Mira' close to the sport complex Olimpiyskiy (Vypolzov lane, bld.7). The central Synagogue «Beis Menahem» is in the 2nd Vysheslavitsev lane, bld. 5A (Mar'ina Roscha metro station).

Moscow has survived many disasters. In 1812 the city was occupied by the armies of Napoleon. Up to beginning of the 19th century Moscow was completely wooden. During the invasion of French troops it was fully burned down. The Triumphal Arch Monument was built up in Moscow as a memorial to the victory over Napoleon. Nowadays it stands on Victory Square, not far from the 'Poklonnaya Gora', forming the united historical-memorial complex with the panorama museum «Battle of Borodino» and the other monuments nearby. It is specially remarkable in the evening when hundreds of fountains are colored with red light and thousands of Muscovites and tourists are strolling around there enjoying the atmosphere of summer-time Moscow.

MOSCOW PARKS

**Aleksandrovsky Sad (Garden)****Metro:** Aleksandrovsky Sad

The capital's most central park runs along the Kremlin's western walls. Aleksandrovsky Sad is directly accessible from the metro station bearing the same name. Picturesque gardens with shady trees and broad lanes were designed and set up in 1821 by O. Bove, one of the chief architects of Moscow, who reconstructed the city after the Great Fire of 1812. First called the Kremlin Gardens, they changed the name in 1856 after the crowning of Alexander II. On the central square of the gardens

you can see the «Ruines» grotto, a peculiar memorial of the revival of Moscow after the devastation in 1812. It contains the Grave of the Unknown Soldier and the Eternal Flame, where you can watch the hourly changing of the guards. To get to the garden, take the metro to the station Aleksandrovsky Sad; it is also just a 3 minute walk from the metros Teatrnaya, Okhotny Ryad, Ploshchad Revolutsii, and a 5 minute walk from Borovitskaya.

**All-Russia Exhibition Center (VVTs – formerly called VDNKh)****Metro:** VDNKh**Web:** www.vvcentre.ru**Open:** 08:00 – 22:00 (summer); 09:00 – 19:00 (winter)

This huge exhibition center and park containing samples of monumental Soviet architecture and oversized statues was established in 1937. There are over 80 pavilions that used to display communism's latest achievements in science, agriculture, industry, and technology. Most pavilions have been

turned into miniature shopping centers, but some still function as exhibits, for example the «Sadovodstvo» (Gardening) pavilion. Do not miss the impressive Fountain of People's Friendship (Fontan Druzhby Narodov) right in the center of the park. It consists of 15 gold-covered statues representing all 15 republics of the former Soviet Union. There is also a Museum of Astronautics; that is definitely what Soviet Union had reasons to be proud of. There are many legendary objects on display including first ever astronauts – stuffed dogs Belka and Strelka. The museum is located in the monument to the Explorers of Space. And, of course, recently restored Vera Mukhina's 24.5 meter (80 ft.) «Worker and Kolkhoznitsa» monument is a must-see sculpture. The VVTs features Russia's biggest Ferris wheel and many other attractions. When you get tired of wandering around this seemingly endless territory, you can sit down to enjoy a shashlik or plov at one of the many outdoor and indoor cafes. To get to the exhibition center, just take the metro to the station VDNKh - VVTs is a 3 minute walk from the metro.



Izmailovsky Park

Metro: Partizanskaya

Web: www.izmailovsky-park.ru

Izmailovsky Park consists of a vast area of parkland (over 1500 hectares) and a large forest consisting of pine trees, birch woods, and ponds. It is 6 times larger than the central park in New York. This is where the Russian tsars once had their summer estates and hunting grounds. Other attractions include a large skating rink in winter. The park is great for family picnics in summer. It is located adjacent to Izmailovsky

Vernisazh - Moscow's famous outdoor souvenir market. The park also features a wide variety of attractions for children. To get to the park, take the metro to the station Partizanskaya (the park is just next to the station) or take the metro to the station Shosse Entuziastov, once out of the metro, take a 3 minute walk along Elektrodny proezd.

MOSCOW MUSEUMS

Museums at the Moscow Kremlin Territory

Address: Red square

Metro: Biblioteka im. Lenina

Opened: Friday – wednesday 10:00 – 17:00

Closed: Thursday

Armory Chamber

Address: Red square, the Kremlin territory

Metro: Biblioteka im. Lenina

Opened: Friday – wednesday 10:00 – 17:00

Closed: Thursday

Diamond Fund

Address: Red square, the Kremlin territory

Metro: Biblioteka im. Lenina

Opened: daily 10:00 – 17:00

Closed: daily 13:00 – 14:00

The State Historical Museum

Address: 1 / 2, Red square

Metro: okhotny Ryad, Ploshchad Revolutsii, Teatral'naya

Opened: Monday, wednesday – saturday 10:00 – 18:00, sunday 11:00 – 20:00

Closed: Tuesday, first Monday of the month

Lenin's Mausoleum

Address: Red square

Metro: Okhotny Ryad / Ploshchad Revolutsii

Opened: Tuesday – Thursday, saturday – sunday 10:00 – 13:00

Closed: Monday, Friday

The State Tretyakov Gallery

Address: 10, Lavrushinsky Pereulok

Metro: Tretyakovskaya

Opened: Tuesday – sunday 10:00 – 19:30,

Closed: Monday

The Pushkin Museum of Fine Arts

Address: 12, Volkhonka street

Metro: Kropotkinskaya,

Opened: Tuesday – sunday 11:00 – 20:00

Closed: Monday

Polytechnical Museum

Address: 3/4, Novaya Ploshchad street

Metro: Kitai-Gorod

Opened: Tuesday – sunday 10:00 – 18:00

Closed: Monday, last Friday of the month

Memorial Museum of Cosmonautics

Address: 111, Prospekt Mira street

Metro: VDNKh

Opened: Tuesday – wednesday, Friday – sunday 11:00–19:00, Thursday 11:00 – 21:00

Closed: Monday

The Tsaritsyno Park-Museum

Address: 1, Dolskaya street

Metro: Tsaritsyno

Opened: Thursday – saturday 11:00 – 18:00; wednesday, sunday 10:00 – 17:00

Park territory: daily 06:00 – 24:00

Closed: Monday, Tuesday

Kolomenskoye Museum-Preserve in Kolomenskoye

Park Address: 39, Andropova Prospekt

Metro: Kolomenskaya

Opened: Tuesday – sunday 11:00 – 17:00

Closed: Monday

Izmailovo Kremlin and Vodka Museum with Degustation

Address: 73, Izmailovskoe shosse street

Metro: Partizanskaya

Opened: daily 10:00 – 20:00



AIRPORTS

There will be volunteers standing in all major Moscow airports waiting for COSPAR delegates from August, 1st to August, 4th. You will recognize them by red t-shirts



Moscow has several air terminals, each servicing various domestic and international locations. The main airports are Sheremetyevo («SVO» - located northwest of the city center) and Domodedovo («DME» - located due South of the city). Domodedovo was entirely rebuilt in an ongoing programme that began in the late 1990s. Scheremetyevo's reputation fell considerably behind, but recent extensive developments have redressed the balance substantially. There is a third airport, Vnukovo, serving some international and domestic destinations.

Domodedovo is a large, single-terminal airport, allowing easy transfers between flights and airlines. Scheremetyevo is a multi-terminal airport. In Spring 2010 new terminals opened at Scheremetyevo and the previous «numbering» of the terminals was replaced by a new letter-based naming scheme. The main international terminal is now Scheremetyevo-F (previously known as Scheremetyevo-2 - a name many taxi-drivers may still use). The other terminals (B, C, & D) are now so extensively newly-built or rebuilt, and their usage reallocated that it is no longer useful to refer to previous names. Terminals A and E will be opened in the future.

Travel to the Airport

Intense traffic-jams during weekday rush-hours (8-11 am, 5-8:30 pm) have made sidestepping road transportation a priority for many travellers. High-speed «AeroExpress» rail services now link both SVO (to/from Belorussky Station) and DME (to/from Paveletsky Station) airports to the centre. The timetables can be accessed [here](#) for Domodedovo, [here](#) for Scheremetyevo, and [here](#) for Vnukovo.

Note that the Aeroexpress Train to Scheremetyevo Airport currently only runs to Terminal F - free shuttle-buses operate from Terminal F to other terminals (less frequently than perhaps desirable, and not very well signposted). Some domestic airlines (but not international services) offer check-in at the City AeroExpress terminal, subject to checking-in from 2-3 hours before the flight. Availability of this service, and mandatory minimum check-in times vary between airlines - you should check with your airline if you plan to use the (free) service. The one-way AeroExpress fare to either airport is 300 roubles (adults) and 80 roubles (children).

A «Business Class» wagon (costing 750 roubles one-way for adults and 380 roubles for children) is available on Scheremetyevo trains only (offering more comfort, space, newspapers and free wifi). There is also an AeroExpress service from Domodedovo and Vnukovo Airports (arriving to Paveletskiy and Kievsky Railway stations respectively). All railway stations are connected with Moscow metro, which is usually in few hundred meters from railway stations.

There are many private cabs and taxi companies who could also take you from/to the airport, for varying fares depending on time of day, market conditions, and type of car. Cheapest fares are approx 1200 roubles (25 Euro) for Russian car, ordered by phone in advance. The price goes up to 2500+ roubles for a luxury car. They still cannot beat the traffic jams however, and you may find yourself chewing your nails while sitting in traffic. The optimum compromise could be a taxi to/from the AeroExpress station, and then high-speed train onwards.

CHECK-IN PROCEDURES

There is a peculiarity (a soviet-era throwback) at Scheremetyevo-F in that the order of check-in procedures is different to what you may be used to at home. First you clear Customs, then you go to a Check-In Desk, and then Passports - Security is checked at the Gate, so allow time for it. At Domodedovo things happen in the more conventional order - Check-In, Customs, Passports, Security. Whether you like it or not, Russia uses full-body scanners in its Security procedures - you are not permitted to decline.

HOW TO GET TO DOMODEDOVO AIRPORT



The best, easiest and safest way to get to/from Moscow airports is Aeroexpress. We strongly recommend you to use it.

The comfortable high-speed Aeroexpress train travels to and from Paveletsky-Moscow and Domodedovo Airport. Time of journey: 40-50 minutes. Fare: 300 Rbs (adult), 80 Rbs (children). Departure from Paveletsky railway station every 30 min from 06:00 until midnight.

Express Buses

Modern Scania, Man, Mercedes buses go non-stop to Domodedovo airport from Domodedovskaya underground station. Timetable: from 06:00 to 00:00. Time of journey: 25-30 minutes. Departure time: every

15 minutes. Fare: 80 Rbs. Children under 7 go free of charge. Luggage carriage is free of charge. Ticketing: one may acquire a bus ticket in the passenger terminal, near the 0 (zero) counter at the domestic arrivals area. Bus stops: 1) Domodedovo airport - at the airport landside area between the entrances 2 and 3; 2) Domodedovskaya metro station - get off the last carriage of the train (if you go from the city centre), turn right in the pedestrian subway. The bus stop is close to the subway exit.

Shuttles

Mini buses go from Domodedovskaya underground station to the airport round the clock. Timetable: from 06:00 to 00:00. Time of journey: 25-30 minutes. Departure time: every 15 minutes. Nighttime schedule (from 00:00 to 06:00): 00-00; 00-40; 01-20; 02-00; 02-40; 03-20; 04-00; 04-40; 05-20; 06-00.

HOW TO GET TO SHEREMETYEVO AIRPORT



Aeroexpress

On 28 August, 2009, direct railway communication was opened between the Belorussky Railway Station and the Sheremetyevo International Airport. On their way to Sheremetyevo trains make a stop at the Savelovsky Railway Station. Trains going in the opposite direction do not make such a stop. In trains to «Sheremetyevo» the passengers may use new business class coaches. They are offered reserved seat with an extra space, free newspapers, hot drinks, refreshments, as well as wireless Internet access. The fare is 750 Rbs (adult), 380 Rbs (children).

Departure from Belorussky railway station from 05:30 until 23:30.

Departure from Sheremetyevo from 05:00 until 23:00. Time of Journey: 35 minutes. Fare: 300 Rbs (adult), 80 Rbs (children).

Departure from Savyolovsky railway station from 05:30 until 23:30. Time of Journey: 30 minutes. Fare: 250 Rbs. Registration only takes place in the Belorussky railway station.

Bus

From Rechnoi Vokzal: Bus 851C (express)- from 6:30 to 20:30 each 20 minutes. Time of Journey: 30–40 minutes. Fare: 25 Rbs. Bus 851 - from 5:35 to 0:49 each 9–30 minutes. Time of Journey: 40–50 minutes. Fare: 25 Rbs. Shuttle buses 48 and 200M - from 6:45 to 21:45. Time of Journey: 30–40 minutes. Fare: 60 Rbs. From Planernaya: Bus 817 from 5:30 to 0:08 each 15–30 minutes. Time of Journey: 40–50 minutes. Fare: 25 Rbs. Shuttle bus 49M - from 6:45 to 21:45. Time of Journey: 30–60 minutes. Fare: 60 Rbs. Travel duration is approximate disregarding traffic jams.

By Car

Sheremetyevo International Airport is situated 28 km to the north-west of the downtown Moscow and at a 11 km distance from the Moscow Ring Road. To see a detailed map press [here](#). Several paid parking lots are available.

HOW TO GET TO VNUKOVO AIRPORT



Aeroexpress

From Metro Kievskaya (exit to Kievsky Train Station). Once out on the Train Station forecourt, round the corner of the Station terminal building and a few yards down its front on your left-hand side you will see the entrance portico of the Vnukovo Aeroexpress Terminal. From here you can catch one of the high-speed trains that ply between Moscow and the Airport.

Departure from Kievsky railway station hourly from 07:00 until 24:00. Departure from Vnukovo hourly from 07:00 until 24:00. One-way fares are as follows: adult 300 Rbs, child (5 to 7 years of age) - 80 Rbs.

Bus

From Yugo-Zapadnaya: Bus 611 or 611C (express) bus. Your stop is Airport Vnukovo. Fare: 20 Rbs (if bought from a ticket booth), 25 Rbs (if bought from the bus driver). Time of Journey: 25-35 minutes. Buses run every 10 minutes. Taxi vans (route 45). Comfortable Ford vans. Fare: 100 Rbs. Time of Journey: 15-20 minutes. From Metro Oktyabr'skaya (circle line). Taxi vans (route 705M). Comfortable Ford vans. Fare: 130 Rbs. Time of Journey: 35-40 minutes.

By Car

Motorists have any of three major highway routes to choose when travelling to or from the Airport, the most popular one is via Kievskoe shosse. Both Minskoe and Borovskoe shosse also serve as convenient access routes. Once at the Airport, you will find plenty of both short- and long-term public parking space and options.

PUBLIC GROUND TRANSPORT. MOSCOW METRO

Public transport in Moscow is rather cheap, you can go by any of its kinds: underground, bus, trolley coach and cars, fixed route taxi, simple taxi. The most popular and convenient kind is underground. Trains arrive every 2 minutes and in the evening the intervals can be changed to 10 minutes. Despite of metro being very convenient mode of transport in the rush-hours it can be overcrowded.



Opening hours: 05:30 AM – 01:00 AM

Apart from underground you can use other modes of transport – trolley coaches and cars, buses and fixed route taxis. Usually you can buy tickets on the stops in kiosks or from the driver.



**In your conference
bag you can find
unlimited pass
for public transport
(Metro, Buses, Trams)**



MOSCOW TAXI

Angel Taxi

English-speaking operators and drivers in Moscow's premier taxi dispatching per-km service with over 1000 drivers in Moscow and over 200 drivers in St. Pete. Individual tours in English around Moscow, Sergiev Posad, Golden Ring. «Standard», «Comfort», «Business». Intercity trips from Moscow and St. Pete across Russia. Corporate events, cost-efficient and cost-manageable corporate taxi.

Tel: +79 ANGEL-TAXI

Web: www.angel-taxi.com

BestMoscowTransfer

Reasonable rates. English-speaking operator. City rides or inter-city transfers. Online booking easy form.

Tel: 8 903 2721733

Web: www.bestmoscowtransfer.com

City-Mobil

English-, Italian- and French-speaking operators. Online order (English version of the website).

Tel: 500-50-50

Web: www.500-50-50.ru

Da! Taxi

English-speaking taxi service.

Tel: 8 (926) 533-00-90

E-mail: taxi-da@mail.ru

Formula Taxi

English-speaking operators. Online order.

Tel: 777-5777

E-mail: info@formula-taxi.ru

Web: www.formula-taxi.ru

Gorodskoe Taxi

English-speaking operators. Online order (English version of the website). Cash and credit cards.

Tel: 500-0500

Web: www.500-0-500.ru

GENERAL INFORMATION ABOUT COSPAR ASSEMBLY

Here you can find useful information for your fruitful work during the Assembly, more details you can find on www.cospar2014moscow.com

Dates: 2–10 August 2014

	Saturday, 2 Aug.	Sunday, 3 Aug.	Monday, 4 Aug.	Tuesday, 5 Aug.	Wednes., 6 Aug.	Thursday, 7 Aug.	Friday, 8 Aug.	Saturday, 9 Aug.
8:30		interdisc. lecture	interdisc. lecture	interdisc. lecture	interdisc. lecture	interdisc. lecture	interdisc. lecture	roadmap report
8:45								
9:00	IAA day (open to all participants)							
9:15								
9:30		scientific sessions	scientific sessions	scientific sessions	scientific sessions	scientific sessions	scientific sessions	scientific sessions
9:45								
10:00		scientific sessions	scientific sessions	scientific sessions	scientific sessions	scientific sessions	scientific sessions	scientific sessions
10:15								
10:30		break	break	break	break	break	break	break
10:45								
11:00		scientific sessions	scientific sessions	scientific sessions	scientific sessions	scientific sessions	scientific sessions	scientific sessions
11:15								
11:30		scientific sessions	scientific sessions	scientific sessions	scientific sessions	scientific sessions	scientific sessions	scientific sessions
11:45								
12:00		lunch and poster session	lunch and poster session	lunch and poster session	lunch and poster session	lunch and poster session	lunch and poster session	lunch and poster session
12:15								
12:30		scientific sessions	scientific sessions	scientific sessions	scientific sessions	scientific sessions	scientific sessions	scientific sessions
12:45								
13:00		scientific sessions	scientific sessions	scientific sessions	scientific sessions	scientific sessions	scientific sessions	scientific sessions
13:15								
13:30		break	break	break	break	break	break	break
13:45								
14:00		scientific sessions	scientific sessions	scientific sessions	scientific sessions	scientific sessions	scientific sessions	scientific sessions
14:15								
14:30		scientific sessions	scientific sessions	scientific sessions	scientific sessions	scientific sessions	scientific sessions	scientific sessions
14:45								
15:00		scientific sessions	scientific sessions	scientific sessions	scientific sessions	scientific sessions	scientific sessions	scientific sessions
15:15								
15:30		scientific sessions	scientific sessions	scientific sessions	scientific sessions	scientific sessions	scientific sessions	scientific sessions
15:45								
16:00		scientific sessions	scientific sessions	scientific sessions	scientific sessions	scientific sessions	scientific sessions	scientific sessions
16:15								
16:30		break	break	break	break	break	break	break
16:45								
17:00	COSPAR Council (closed)	scientific sessions	break	scientific sessions	scientific sessions	scientific sessions	scientific sessions	scientific sessions
17:15								
17:30		interdisc. lecture	opening and awards ceremony	open SC/Panel business meetings	open SC/Panel business meetings	open SC/Panel business meetings	Elsevier reviewer workshop	
17:45								
18:00								
18:15								
18:30								
18:45								
19:00								
19:15								
19:30								
19:45								
20:00		Elsevier author workshop	opening reception		public lecture (TBD)		social event	COSPAR Council evening (closed)
20:15								
20:30								
20:45								
21:00								
21:15								
21:30								
21:45								

VENUE

Moscow State University

Lomonosovskiy Prospekt 27 – Moscow and in the Main Building of the University (Vorobyevy Gory, 1).

MAIN BUILDING OF MSU

The opening ceremony and welcome reception will take place in the Main Building of the University (Vorobyevy Gory, 1).



MSU FUNDAMENTAL LIBRARY

Registration, the exhibition and student area, as well as several accompanying events, will be located in the Fundamental Library (Lomonosovsky prospekt, 27).



SHUVALOVSKIY AND LOMONOSOVSKIY BUILDINGS OF MSU

Scientific and poster sessions will take place in the Shuvalovsky and Lomonosovsky buildings on both sides of the Fundamental Library (Buildings 1 and 2 on the map). Coffee-breaks and lunches will be provided in both buildings.



WI-FI



Wireless Internet will be available at the meeting venue
You can get Wi-Fi instructions in the venue info.

BADGES

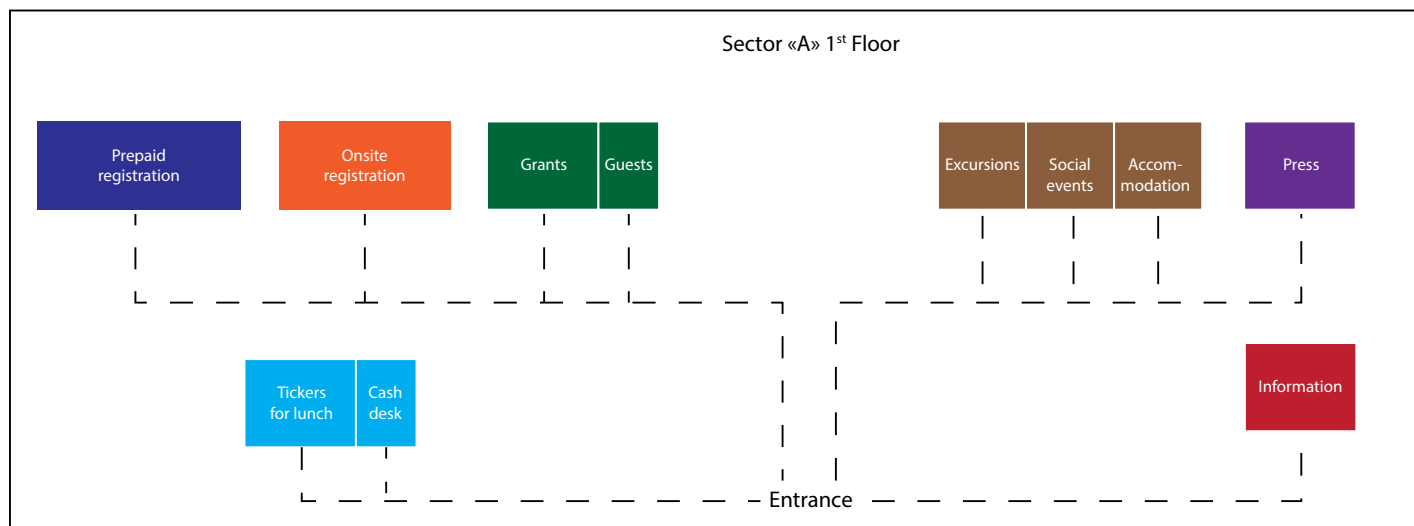


Please mind that access to Lomonosovskiy, Shuvalovskiy and Main buildings of MSU is provided by badge, given to you on registration, so, keep it with you at all times.

The 40th COSPAR SCIENTIFIC ASSEMBLY FLOOR PLAN Fundamental Library



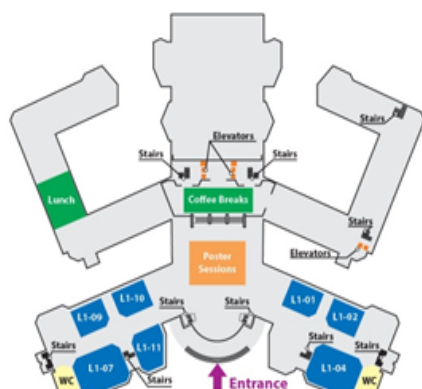
Registration desk scheme



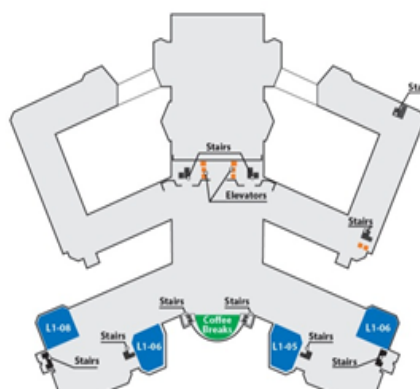
COSMOS The 40th COSPAR SCIENTIFIC ASSEMBLY
August 2–10, 2014, Moscow, Russia

Floor Plan of Lomonosovsky Building

1st floor



2nd floor



COSMOS The 40th COSPAR SCIENTIFIC ASSEMBLY
August 2–10, 2014, Moscow, Russia

Timetable (August 03–09, 2014)

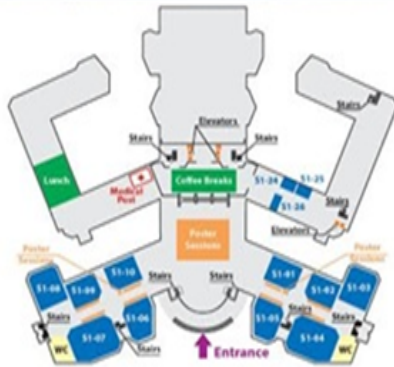
Room (Size) \ Time	Sun AM	Sun PM	Mon AM	Tue AM	Tue PM	Wed AM	Wed PM	Thu AM	Thu PM	Fri AM	Fri PM	Sat AM	Sat PM
L1-01 (150)			D2.4		D2.5			D2.5				D2.3	
L1-02 (150)				A3.1				A3.1					
L1-03 (150)				A2.1				A2.1					
L1-04 (300)			A1.1				A0.1		A1.1				
L1-05 (300)			D3.1		D3.2	D0.1	D3.2	D3.4		D3.5			
L1-06 (300)			B0.2		B0.3			B0.9		B0.7			
L1-07 (300)			B0.1					B0.4					
L1-08 (150)			D2.1					D2.2					
L1-09 (150)		B0.8		B0.5		B0.6		D3.3					
L1-10 (150)			D1.1		D1.2		D1.2	D1.4		D1.3			

A	Earth's Surface, Meteorology and Climate	F	Life Sciences as Related to Space	PPP	Planetary Protection
B	Earth-Moon System, Planets, and Small Bodies of the Solar System	G	Materials Sciences in Space	PBEM	Radiation Belt Environment Modelling
C	Upper Atmospheres of the Earth and Planets including Reference Atmospheres	H	Fundamental Physics in Space	PSB	Technical Problems Related to Scientific Ballooning
D	Space Plasmas in the Solar System, including Planetary Magnetospheres	PCB	Capacity Building	PE	Satellite Dynamics
E	Research in Astrophysics from Space	PE	Education	PEAS	Potentially Environmentally Detrimental Activities in Space
		PEAS	Potentially Environmentally Detrimental Activities in Space	PSW	Space Weather
		PEX	Exploration	S	Special Events

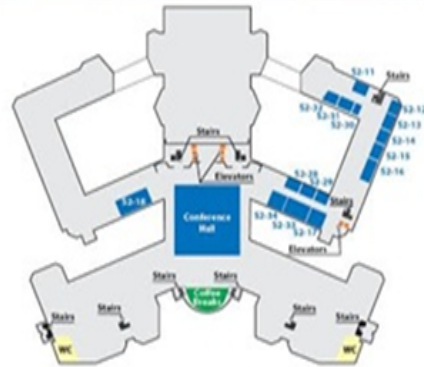
COSMOS The 40th COSPAR SCIENTIFIC ASSEMBLY
August 2–10, 2014, Moscow, Russia

Floor Plan of Shuvalovsky Building

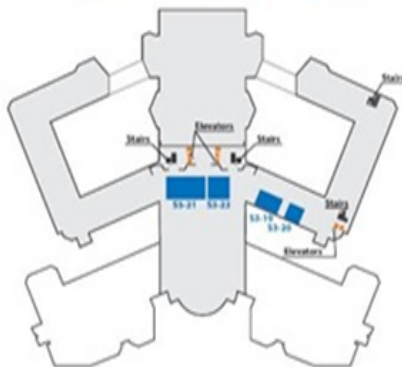
1st floor



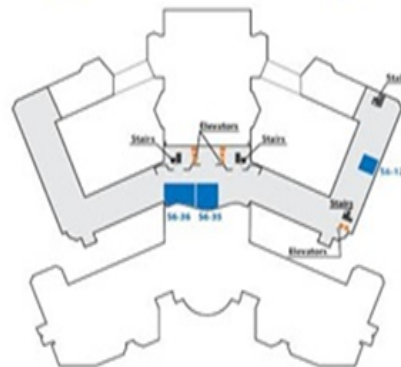
2nd floor



3rd floor



6th floor



COSMOS The 40th COSPAR SCIENTIFIC ASSEMBLY
August 2–10, 2014, Moscow, Russia

Timetable (August 03–09, 2014)

Room (Size) \ Time	Sun AM	Sun PM	Mon AM	Tue AM	Tue PM	Wed AM	Wed PM	Thu AM	Thu PM	Fri AM	Fri PM	Sat AM	Sat PM
S1-01 (150)				C2.2				C2.1		C2.3			
S1-02 (150)			LR.1		C3.3			C3.2				C3.1	
S1-03 (150)		E1.6		PSW.2	PSW.3		PSW.1			PRBEM.1		PRBEM.2	
S1-04 (300)		C4.3					C1.1						
S1-05 (300)		F4.1		F4.2	F4.4	F4.3	F4.4	F4.5	F4.6	F4.7	F4.6		
S1-06 (300)		PE.1		PE.2			PSB.1						
S1-07 (300)			F5.3	F5.2	F5.5	F5.1	F5.5	F5.4					
S1-08 (150)	S.4	S.3		PSD.1			C5.1					C0.4	
S1-09 (150)		S.1		F1.1			PEDAS.1			C5.2			
S1-10 (150)		F2.2	F2.1	F2.2	F2.3	F2.1	F2.3	F2.2	F2.3	F2.2	F2.3		
S2-11 (50)		C0.1			C4.1		C1.2			C1.3			
S2-12 (50)							C0.2			C0.3			
S2-13 (50)		E1.1		E1.11	E1.12	E1.8		E1.10					
S2-14 (50)		G0.2	G0.1	G0.2	G0.3					E2.5			
S2-15 (50)		E1.2		PEX.1	PPP.1	PPP.2	PPP.3			E2.1			
S2-16 (60)		E2.2		E2.6		E2.7				E1.5			
S2-17 (50)				E1.6			E1.20			E1.3			
S2-18 (70)				E1.18	E2.4		E2.3			E1.19			
S3-19 (80)		F3.1		F3.2		F3.4	F3.3						
S3-20 (50)		H0.1	H0.2	H0.3	H0.4	H0.5							
S3-21 (100)		E1.9		E1.17			E1.13						
S6-12 (100)		E1.15		E1.4			E1.14			E1.16			

A	Earth's Surface, Meteorology and Climate	F	Life Sciences as Related to Space	PPP	Planetary Protection
B	Earth-Moon Systems, Planets, and Small Bodies of the Solar System	G	Materials Sciences in Space	PRBEM	Radiation Belt Environment Modeling
C	Upper Atmospheres of the Earth and Planets including Reference Atmospheres	H	Fundamental Physics in Space	PSB	Technical Problems Related to Scientific Ballooning
D	Space Plasmas in the Solar System, including Planetary Magnetospheres	PCB	Capacity Building	PSD	Satellite Dynamics
E	Research in Astrophysics from Space	PE	Education	PSW	Space Weather
		PEDAS	Potentially Environmentally Detrimental Activities in Space	S	Special Events
		PEX	Exploration		

REGISTRATION FEE

Registration fee	On-site: August 2–10, 2014	In RUB
Full	€650	31 200
Student	€175	8400
Accompanying person	€200	9600
Accredited media	0	0

Registration fee includes:**Regular participants, students and press:**

- conference documents
- access to all scientific sessions (including poster sessions)
- free coffee breaks between sessions (twice a day)
- free entry to the Opening and Awards Ceremony
- free entry to the Opening Reception
- free entry to the public lecture
- free entry to the exhibition

Accompanying persons:

- free entry to the Opening and Awards Ceremony
- free entry to the Opening Reception
- free entry to the public lecture
- free entry to the exhibition

SPECIAL EVENT

Grand Opening Ceremony of the 40th COSPAR Scientific Assembly will be held on August 4 at 5 p.m. in the Assembly hall of the **Main building of Moscow State University (1, Leninskie Gory)**

In the program of Grand Opening Ceremony:

- Greetings of astronauts from the outer space (live broadcast)
- Performance of leading dance and vocal collectives of Moscow
- Awarding of COSPAR medals
- Awarding of J.B. Zeldovich medals

EXCURSIONS AND TOURS ON REQUEST

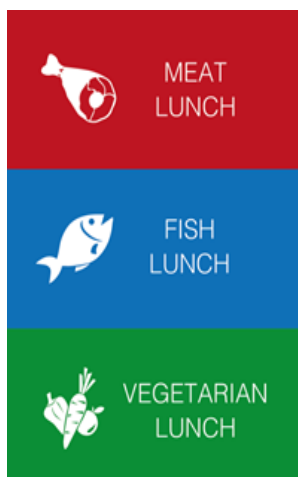
1. City tour
2. The Kremlin + cathedral
3. Tsaritsyno
4. The State Tretyakov Gallery
5. Kolomenskoe (territory + house of Peter I)
6. Moscow at night
7. Sergiev Posad
8. Different Space museums
9. Pre- and post congress tour to St.Petersburg
10. Pre- and post-congress tour to Golden Ring

Tours and excursions booking are available on the web-site of The 40th COSPAR SCIENTIFIC ASSEMBLY in Travel information part. You can also order them on Registration desk during all Assembly.

TRANSFERS

For your comfort we can arrange a transfer for you from the airport to your hotel upon your arrival. In the airports you will be met by volunteers who would be dressed in red t-shirts and will be holding an «**COSPAR - MOSCOW 2014**» Assembly banner.

In order to make a reservation of transfer you will need to complete form on the web-site:
<http://cospar2014moscow.com/pages/transfers/index.php#cont-page>.



LUNCH ON THE VENUE

During the Assembly you will be able to have lunch in both Shuvalovskiy and Lomonosovskiy buildings. You may purchase tickets for lunch near the lunch area.

There are three lunch choices: Meat, Fish or Vegetarian.

The price will be 300 Rubles (about \$10 or 6,5 Euro).



GETTING GOOD FOOD FOR A REASONABLE PRICE IN MOSCOW

The Russian capital is always ranked in the top five most expensive cities in the world by many different rating guides. Even so, it's easy to eat well and inexpensively in Moscow. You just need to know the answer to three basic questions: What? Where? And when?

Many restaurants in Moscow offer business lunch at very reasonable prices - on average from 195 to 350 rubles. Of course, many times the portions aren't huge and you may be left hungry upon finishing.

You can get a hearty meal at an affordable price at any self-service restaurant in Moscow. If you see that in any establishment they are using trays, you can be sure that your meal will be cheap yet satisfying. In free-flow restaurants they serve simple and unpretentious home cooking. Self-service chain restaurants such as «Moo-moo», «Grabli», and «Vilka-lozhka» promise guaranteed quality. Here a full meal with a starter, soup, main dish and a glass of compote (stewed fruit) costs anywhere from 300-500 rubles.

Chain restaurants, in general, offer relatively inexpensive and good quality food. Some of the most well-known chains are "Yakitoria" and "Ginno-Taki" (Japanese cuisine), "Yaposh" (Japanese, Russian, Chinese and Thai cuisine), "Shesh Besh" (Central Asian cuisine), and "Café Khinkalnaya" (Georgian cuisine).



There are many coffee shops in Moscow, but you will seldom find an opportunity to buy a coffee and a sandwich for 5 euros like you can in Europe. The capital's coffee shops, including the chains, aren't very cheap and the portions can be quite small. A cup of coffee will cost at least 120 rubles and a quiche or a sandwich which will run you about 5 to 6 euros often won't be enough to hold you over.

If you live or work in the southwest region of the city don't miss the chance to eat well and cheap in the area of the Patrice Lumumba University of Peoples' Friendship. Here former and current students from Russia's friendly neighbor countries actively develop their own

businesses by opening cafes that serve their nation's traditional cuisine. You can have a delicious Indian or Chinese dinner here for a very modest price.



If you are a fan of exotic cuisine, pay attention to the street markets, and not only for food but for goods as well. Here representatives of many nationalities engage in market trade (depending on the market, it could be Chinese, Vietnamese, or nationalities from former soviet states of theCaucasus) preparing meals for their people. Typically, it's a nondescript pavilion with plastic furniture and often the food establishments don't have names. The interiors in such places are minimalist, the atmosphere is exotic and unlikely to attract aesthetes but the food is authentic, the prices are ridiculously low and you don't have to worry about food poisoning here anymore than you would in an expensive restaurant in the center.

Famous multinational brands like McDonalds, Subway, and Burger King as usual guarantee low prices and reasonable quality.

If you decide to go shopping in a big mall, avoid the local food court. The quality isn't better than the cheap cafes but prices are still comparable to eating at a restaurant. It's much wiser to visit some kind of cafe which can be found in the very same mall. For example, lunch at «Yolki-Palki», «Il Patio» or «Planeta sushi» is not very expensive and the quality is definitely better than what you would find at the food court.

MONEY MATTERS

Please note that all payments in Russian Federation could be only in local currency: Roubles (RUR).

You can find exchange offices of banks in your hotel or nearby metro station. Between Lomonosovskiy building and 'Universitet' metro station there are at least 4 bank offices of: Alfa Bank, SMP Bank, VTB, Sberbank, etc.

The rate of Central Bank of Russia on July, 29th 2014 is:

Currency code	Unit	Currency	Rate
AUD	1	Australian Dollar	33.1861
BRL	1	Brazil Real	15.8444
HUF	100	Hungarian Forint	15.3811
KRW	1000	South Korean Won	34.4433
DKK	10	Danish Krone	63.6573
USD	1	US Dollar	35.3457
EUR	1	Euro	47.4799
INR	100	Indian Rupee	58.8017
CAD	1	Canadian Dollar	32.7002
CNY	10	China Yuan	57.1161
NOK	10	Norwegian Krone	56.7584
SGD	1	Singapore Dollar	28.4518
TRY	1	Turkish Lira	16.8586
GBP	1	British Pound Sterling	60.0276
CZK	10	Czech Koruna	17.2806
SEK	10	Swedish Krona	51.8433
CHF	1	Swiss Franc	39.0517
ZAR	10	S.African Rand	33.6018
JPY	100	Japanese Yen	34.6986



There is a plenty of ATMs in Moscow. There are some in MSU (in Library close to registration desk) and in all hotels

The more expensive and established the shop, the less likely you will have problems paying by card. In boutiques, large shopping malls and chain restaurants you don't need to think about bringing cash. However, many small grocery stores still take only cash, and while many big supermarket

chains such as « kopeyka” and “pyatyorechka” claim that they take cards, often it turns out that they only take cards with a special chip or cards issued from certain banks.

Small independent restaurants usually do not accept credit cards. The same goes for cafes with modest interiors and prices, as well as practically all self-service and fast food restaurants. In more established and expensive restaurants and chains you can pay by card without any problems. However, you should be prepared for some unexpected stresses. It's possible to find yourself in a situation where upon paying by credit card, the waiter will run off somewhere unseen to complete the transaction for as long as ten or more minutes, leaving you nervous in anticipation.

Taxis, even official ones, generally do not accept credit cards. The same goes for practically any form of public transport, be it metro or train.

Traveler's checks are still foreign to Moscow. You can cash them only in certain departments of well established banks and usually at an unfavorable exchange rate.

Despite the fact that in recent years city and federal governments have been actively working to reduce the number of small currency exchange facilities, there are still many of them in Moscow. For the most part they all employ the same trick: upon entering the customer will see unbelievably good exchange rates under which only the most attentive customers will notice in small writing «from 10,000 dollars/euros». For smaller sums, of course, the exchange rate is absolutely extortionate. In conclusion, it is much safer and more profitable to exchange all foreign currency at a reputable bank.

A line at the ATM is not a rare occurrence, especially at ATMs that service two or three big government banks which are programmed to pay salaries.

Despite rumors that run around Moscow about stolen credit cards, ATMs bolted with pin code readers and the dangers of giving out your credit card information online, the reality is that credit card fraud in Moscow is rare. You can feel safe to use your credit card, in places that take them, without fear.

MOBILE CONNECTION

If you use your mobile phone often we strongly recommend you to do so in roaming as you bills could be excessive both for your calls and Internet. Instead of this you can easily buy local SIM cards and a cheap telephone should you need to stay available with your usual telephone number.

There are 3 main mobile operators in Russia:



www.mts.ru



www.beeline.ru



www.moscow.megafon.ru

TIME LAG

Moscow time is +3 hours comparing to Greenwich.

CLIMATE

Climate in Moscow is moderately continental. According to the modern statistics the average temperature in the beginning of August is +20, also it can be rainy and stormy. **During Cospar meeting we expect hot weather about 30 degrees by Celsius.**

CUSTOM RULES

Import to the Russian Federation: Foreign currency import in amount that is over 10.000 USD can be possible only if the declaration form is filled in.

Medicine import: Private individual can import and export medicine in amount needed for personal use.

TELEPHONE

International calls: dial 8 – 10 – country code – city code – subscriber's number.

Long-distance calls: dial 8 – city code – subscriber's number.

USEFUL TELEPHONE NUMBERS

Single emergency number – **112**.

SHOPS, BANKS, MUSEUMS OPENING HOURS

Opening hours can vary. Generally the schedule is hanged out at the entrance. At the weekends and holidays all establishments are on short day schedule.

ELECTRICITY

Sockets are European, 220V, 50Hz.